

Christine Pilkinton Fine Art

PHONE 615-860-2368

EMAIL CHRISTY@PORTRAITCREATIONS.COM

WEB WWW.PORTRAITCREATIONS.COM

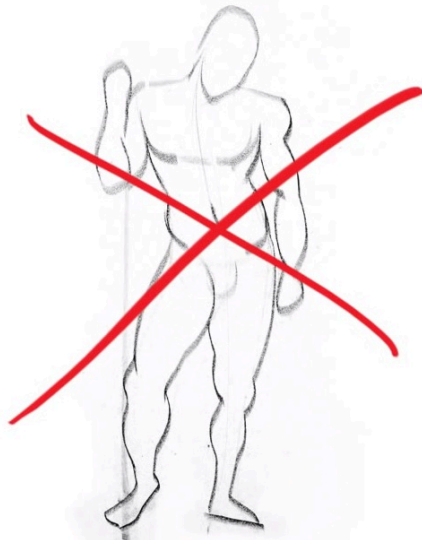
*To send light into the darkness of men's hearts
- such is the duty of the artist. Schumann*

Spotting the ACTION LINE

Some Illustrations taken from Proko TV, Stan Prokopenko's YouTube videos.



Proko[®]



Pr



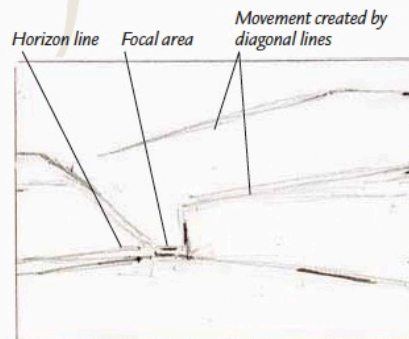
What are ACTION LINES?

Action lines are the directional lines of the painting that indicate movement. They may conflict with each other or they may echo each other. Establish action lines early in the design process to indicate how the viewer's eyes should move throughout the painting.

The action lines in your painting should direct the viewer's attention around the picture. You don't want any lines that stop the viewer's eye from moving or lead it out of the picture. Follow these guidelines for creating effective action lines.

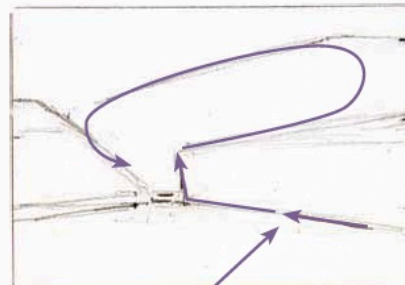
- ❖ Avoid lines that point directly to the corners of a painting—especially the lower corners. The viewer's attention will go right out of the painting like water down a drain.

PLANNING ACTION LINES



1 Divide the Scene Into Large, Abstract Shapes

Break up the canvas with large abstract shapes. Direct major lines toward the center of interest.



2 Plan the Movement

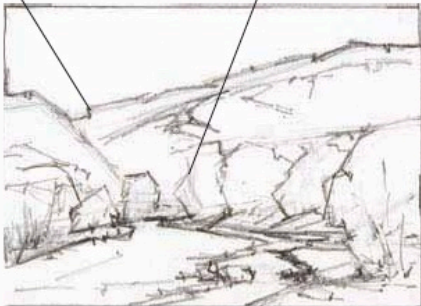
Put some marks on your sketch to indicate how you want the viewer's eye to move through the painting.

- ❖ Avoid placing important elements in the exact center of the picture. There is no movement in the center; remember that the axle is the part of the wheel that rotates the least.
- ❖ Vary the spacing of your elements so the distance between them doesn't look artificial. Avoid placing objects equidistantly.
- ❖ Avoid lines that direct the viewer out of the picture.

Once you have become comfortable with design, however, try breaking the rules. This will help you find out what works and what doesn't—and why. Use a sketchbook for thumbnail drawings to help you become more familiar with your subject and to work on the design of your painting. Sketches help you visualize your painting and work out problems before you get to your canvas.

Jagged edge slows movement of diagonal and interlocks the mountains to the shape of the sky

Vertical and horizontal lines stabilize the diagonal lines



Adding tonal value and detail to the sky creates additional movement

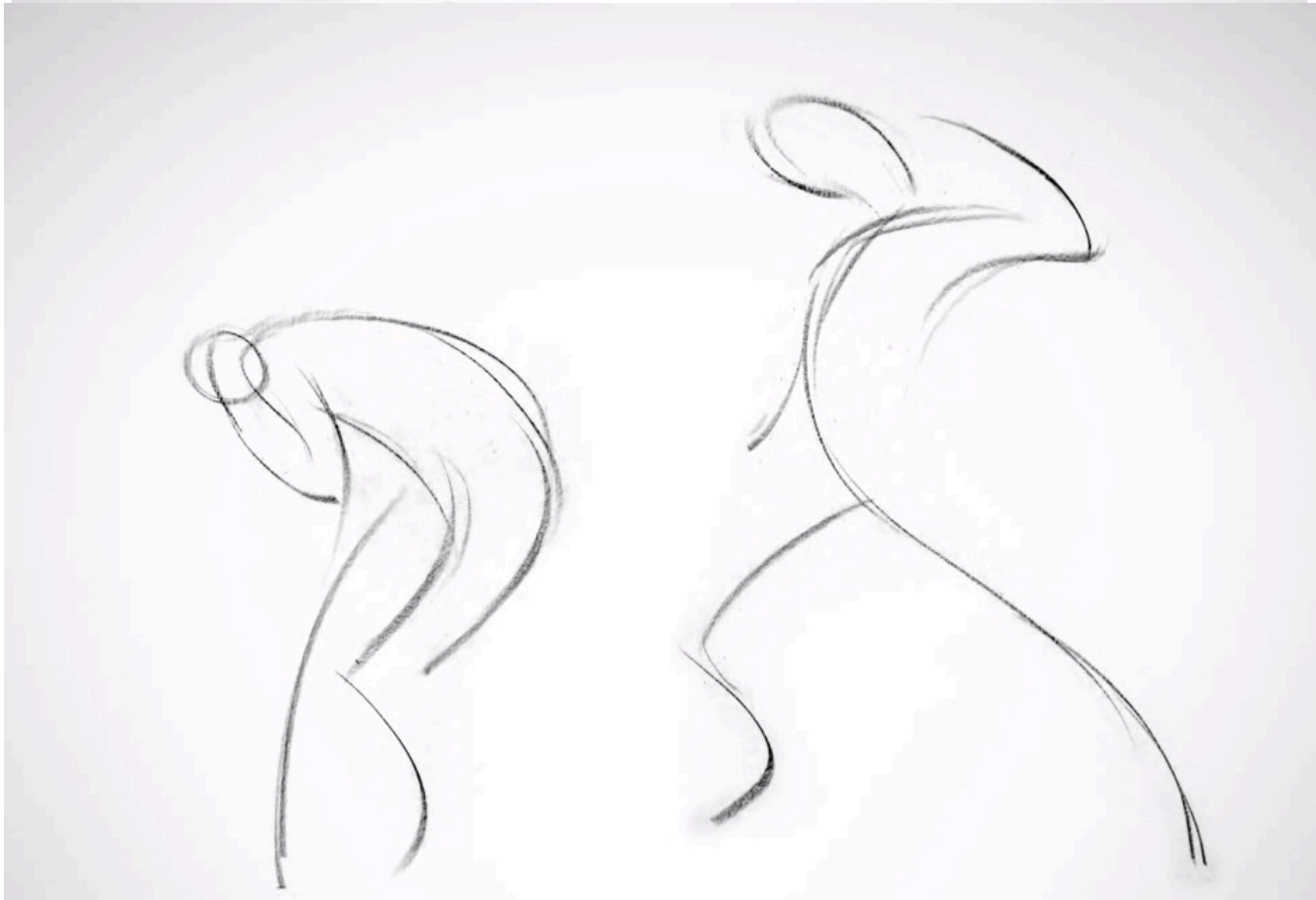


3 Define the Subject Matter From the Abstract

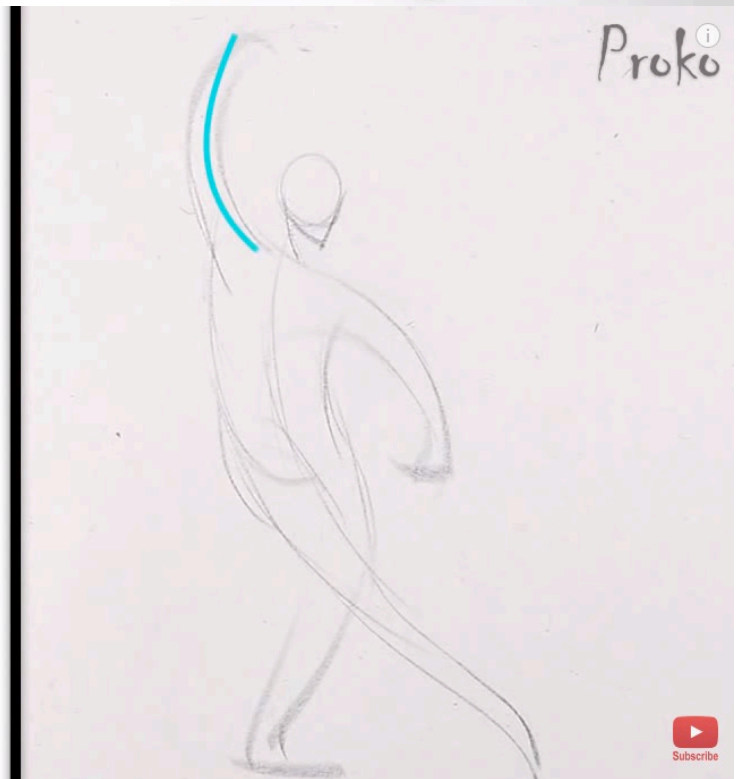
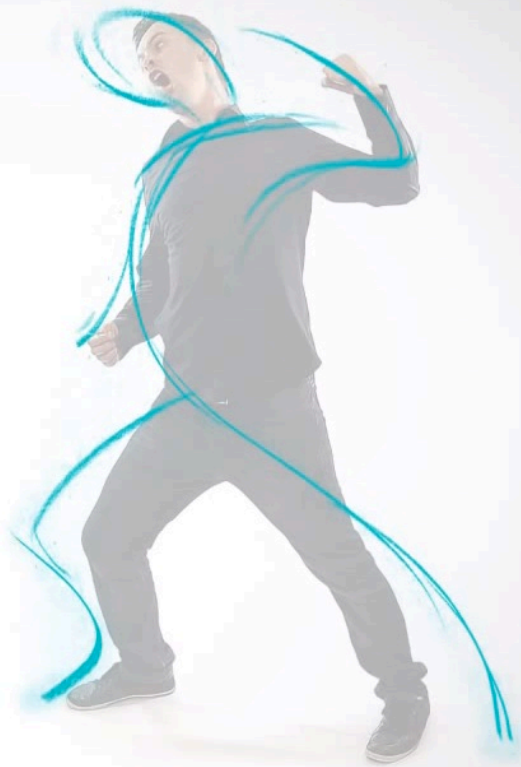
Carve the scene from the abstract shapes you created. Use the creek to move the viewer into the painting and up into the hills toward the sky shape.

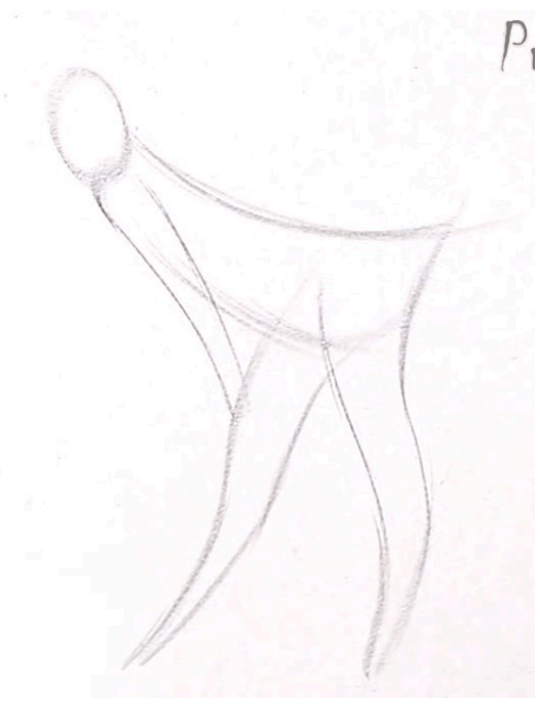
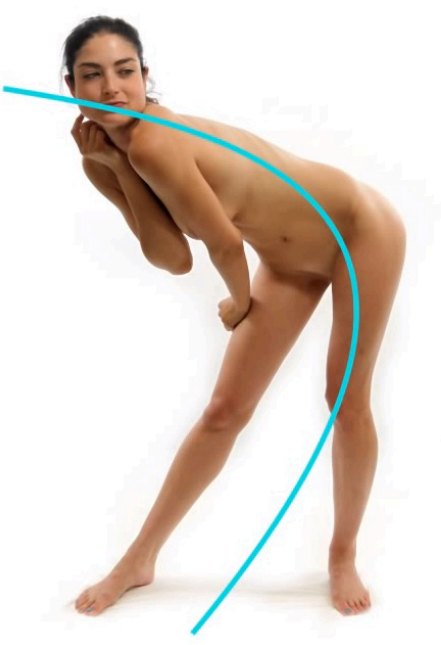
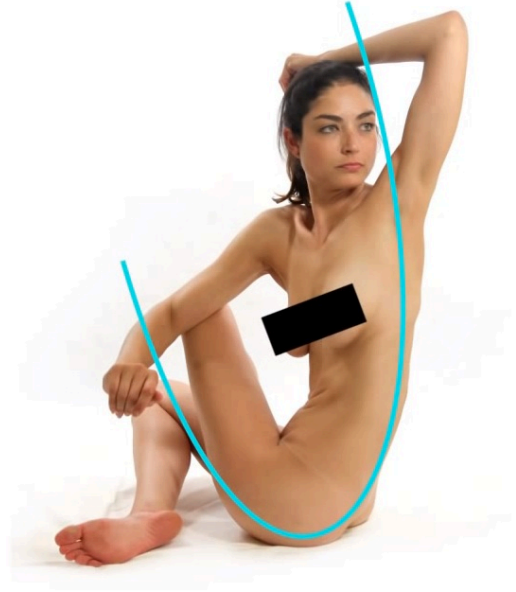
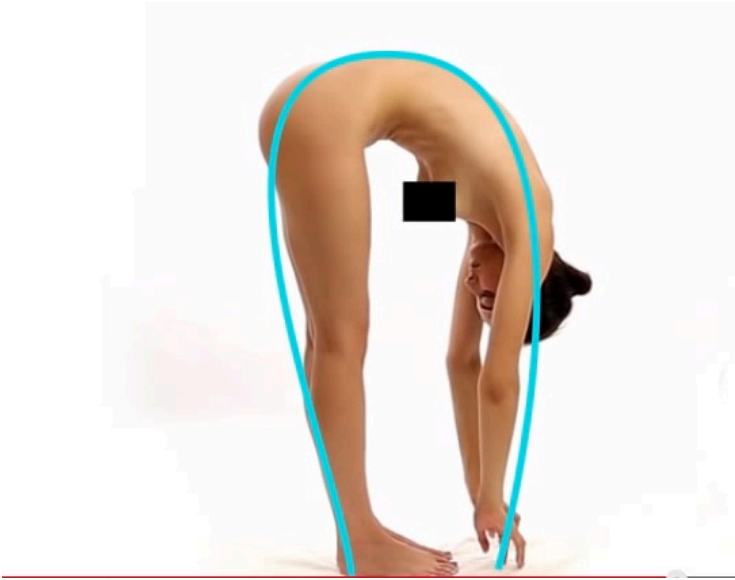
4 Lay In the Values

With the addition of the values, the sky shape now has movement as well. The viewer can return to the painting.

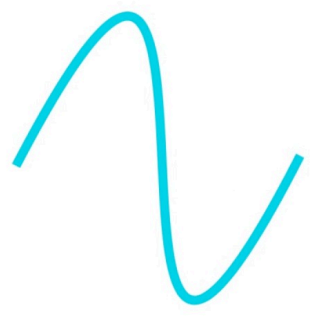


Exaggerate!





C S I



Proko





Zig Zag



Flowing Curve